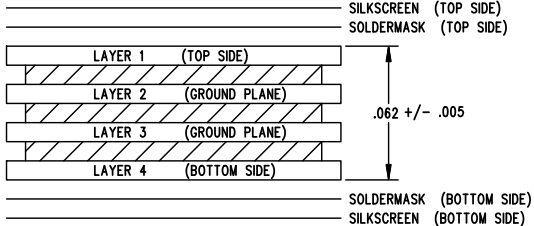


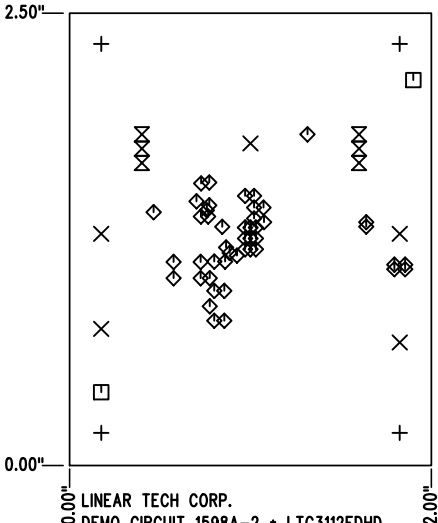
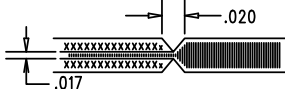
REVISION HISTORY				
ECO	REV	DESCRIPTION	APPR	DATE
-	2	PRODUCTION FAB	JIM N.	10-07-10

LAYER STRUCTURE  
4 LAYER




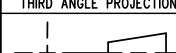
NOTES: UNLESS OTHERWISE SPECIFIED

1. FAB PER IPC-A-600.
2. MATERIAL: -EPOXY FIBERGLASS, NEMA GRADE FR-4  
-FINISHED THICKNESS TO BE 0.062" +/- .005"  
-TOTAL OF 4 LAYERS WITH 2 OZ. CU ON THE OUTER LAYERS  
AND 1 OZ. CU ON THE INNER LAYERS.  
-FLAMMABILITY RATING: 94 V-0 MINIMUM.
3. SIZE: CUT TO DIMENSIONS AND TOLERANCES SHOWN.  
0.00 ARE PRIMARY DATUMS.
4. DRILLING: -DRILL HOLES PER SCHEDULE. PLATE THROUGH  
HOLES WITH COPPER, 0.001" THICK MIN.  
-ALL HOLE SIZES ARE SPECIFIED AFTER PLATING.  
-HOLE LOCATION TOLERANCES ARE +/-0.003"  
IN RELATION TO CENTER
5. FINISH: -SMOBC USING LPI BOTH SIDES, COLOR GREEN.  
-GOLD IMMERSION BOTH SIDES.  
(LEAD FREE SOLDER CAN BE USED FOR PROTOTYPE)  
-FOR SILKSCREEN: BOTH SIDES USE WHITE NON-CONDUCTIVE INK.
6. DO NOT ALTER ARTWORK e.g. TO ADD LOGO OR DATE CODE.  
PAD SIZE CAN BE MODIFIED TO MEET END FINISH.
7. PCBS ARE TO BE RoHS COMPLIANT.
- 8 DO NOT ALTER SOLDER MASK MAINTAIN .0018" OVERSIZE  
ON SMT PADS. A .005" WEBBING IS REQUIRED BETWEEN SMD PADS.
9. SCORING FOR PANELIZED PCB: "PRODUCTION FAB ONLY"



LINEAR TECH CORP.  
DEMO CIRCUIT 1598A-2 \* LTC3112EDHD  
15V, 2.5A SYNCHRONOUS BUCK-BOOST  
DC/DC CONVERTER  
DATE: 10-07-10

SIZE	QTY	SYM	PLATED	TOL
0.19	4	+	NO	+/-0.003
0.094	5	X	YES	+/-0.003
0.07	2	□	NO	+/-0.003
0.01	46	◇	YES	+/-0.003
0.031	6	⊗	YES	+/-0.003

UNLESS OTHERWISE SPECIFIED DIMENSIONS ARE IN INCHES TOLERANCES ON ANGLE ±1 0.XX" = ±0.01" 0.XXX" = ±0.005" INTERPRET DIM AND TOL PER ASME Y14.5M-1994	APPROVALS			 <b>LINEAR TECHNOLOGY</b>	1630 MCCARTHY BLVD MILPITAS, CA 95035 PH: (408)432-1900 www.linear.com LTC CONFIDENTIAL- FOR CUSTOMER USE ONLY	
		NAME	DATE		TITLE: FABRICATION DRAWING: 15V, 2.5A SYNCHRONOUS BUCK-BOOST DC/DC CONVERTER	
	PCB DES.	NC	10-07-10			
	APP ENG.	JIM N.	10-07-10			
THIRD ANGLE PROJECTION						
						
DO NOT SCALE DRAWING	SCALE: NONE			SIZE N/A	IC NO. LTC3112EDHD DEMO CIRCUIT 1598A	REV. 2
				FILENAME: DC1598A-2.PCB	SHT 1 of 1	